

Visualizing the Area Rug While Decorating

By Dasha O. Morgan

Placement, size and color of a carpet in a room are all of utmost importance when one is decorating. Anyone selling area rugs realizes this. It is not an exact science.

In order to receive the best results, many decorators start with the rug. Others decorate the space and then seek to find the best rug to tie it all together. Hours may be spent in the market looking for the "perfect" rug. In many cases the only possible solution is to get a custom area rug by matching the exact tones in the fabrics and artwork, as well as existing paint colors.

The existing flooring (hardwood, tile, brick) needs to be considered, as well as the size of the room. Are you trying to make the room seem smaller or larger? If someone wants the

many considerations in planning and decorating an area.

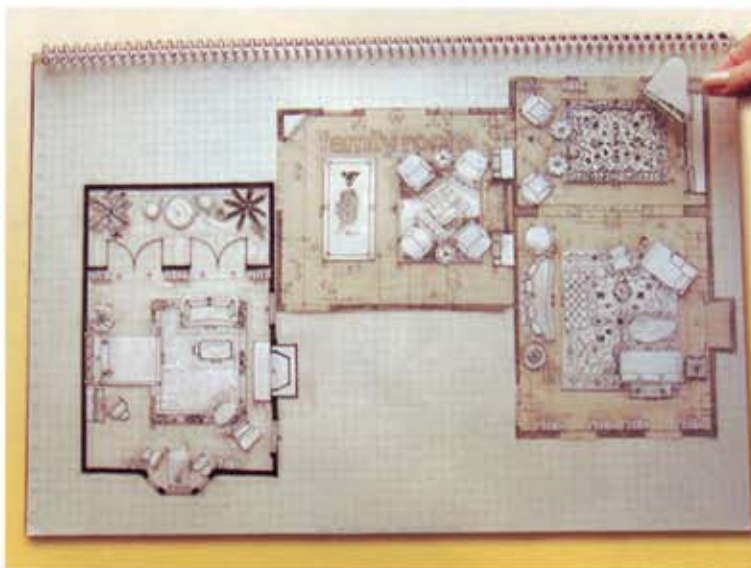
E-Z DECORATOR™

Cheryl Howard of Los Angeles has created an interior design tool to help those decorating with their decisions and their layouts. She has been featured on the Christopher Lowell Show, received an ADEX award in 1997 for her decorating tools, and has a Website, www.ezdecorator.com.

In her E-Z DECORATOR™ Furniture and Room Planner System, she offers a birds eye view in the form of a kit in a binder. This is one of a number of binders available with amazingly detailed drawings for all rooms in a house. A floor plan can be created easily, so that there is a visual of what the rooms will look like. Her professional design tools have rug illustrations in 1/4" scale for layouts that salespeople and designers can use.

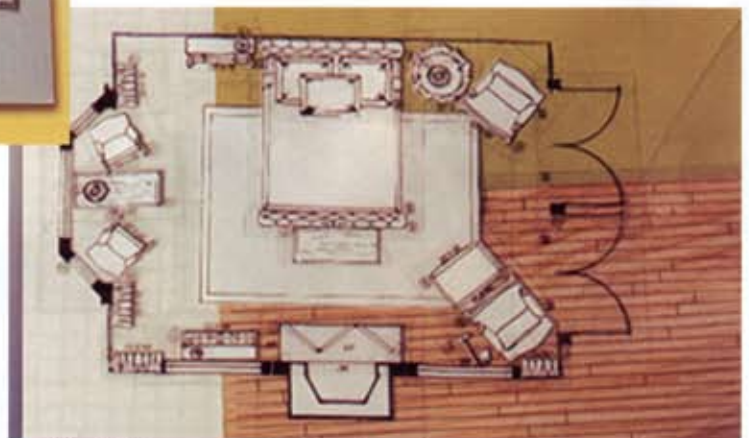
The E-Z DECORATOR™ Furniture and Room Planner offers a variety of scaled drawings printed onto reusable, static-cling vinyl decals (like the old peel-and-press colorforms). Included is a special grid that allows the drawings to stick to the blueprints or printed floor plan. If someone doesn't have a blueprint but knows the dimensions of the room, he or she can use a washable pen to draw in the dimensions of the room directly on the grid.

There are over 1700 illustrations that include rugs, furniture, accessories and architectural elements. The forms are copied and then colored in with colored pens, so that the decorator can quickly produce a scaled colored



room to appear large, then a large rug is needed. Too many times the rug is too small for the needed space—making a large room seem small. It is sometimes suggested that leaving a balanced border of floor around the entire room makes the room appear larger and enhances the look of the room.

The room may already have a strong focal point, such as a fireplace, in which case an overall pattern in the rug might be more suitable. A center medallion might detract. Traffic flow must be considered. A rug can lead you naturally into another room. Is this a heavily traveled area, such as a hallway or entrance way? Remember, an Oriental rug placed in an entrance or hallway protects the floor while enhancing the decor, but a needlepoint rug might not be strong enough for the wear and tear of that area. Sound and acoustical needs should also be considered. Will the rug muffle noise from a particular area?—such as the kitchen or entryway? There are



The E-Z Decorator scaled drawings allow a decorator to produce a scaled, color drawing, for the client. It isn't a computer generated picture but a color wash. The decorator can show a finished product with a color drawing that would cost a considerable amount of money if drawn by hand. It is a professional, visual tool.

drawing for the client to see. It isn't a computer generated picture, but a watercolor wash. This allows the decorator to

show a finished product with a color drawing that would cost a considerable amount of money if drawn by hand.

How much floor area will the rug take up and how should the furniture in the room be arranged on, or around, the rug? Howard has put together a package to help you visualize, accurately and scaled to the room size, with the rug and the furniture working together. It takes the guesswork out of the project.

There are a number of rug and furniture drawings in various styles in the binder. In addition there are a variety of actual flooring patterns—hardwood, tile, brick and stone that are drawn to scale. These patterns can be slipped underneath the furniture layout for a better visual understanding. The hand drawn drawing represents specific styles and creates a visual picture of what a room might look like. It is easy to use and professional.

Howard says, “The first item I specify when I start the design of a room is the rug. The rug not only anchors the room but also provides the color palette. That is why I designed the E-Z DECORATOR™ Furniture and Room Planner to include rugs and flooring patterns. I felt that there was a need for a tool that would go beyond furniture layouts.”

THE RUG AS THE FOUNDATION AND ANCHOR

Susan Kinney of Suezen Designs/Interior Design and Consultation offers her thoughts:

“Think of the rug as the foundation for your room. The rug should be big enough to anchor the furniture grouping. However rugs are not floor covering. For many rooms with a sofa and a couple of chairs, the 8' x 10' size is a good starting point. If you want to make the room seem as large as possible, go with the largest rug that your room can accommodate. Be sure to leave a nice proportion of hardwood!

For dining rooms, the rug should be big enough that the chairs can be moved away from the table without falling off of the rug. You will want the back of the legs of your chairs on the rug to avoid getting them caught on the edge of the rug when you are seated. The rug size should be based on your day-to-day needs. I have found that an 8' x 10' rug is a minimum size to fit most tables seating six. Measure the size of the table and add thirty inches to the length and width. However, if you often entertain and add leaves to your table, this is VERY important and must be considered! Please choose a rug to accommodate your guests safely and comfortably.”

There are a number of factors to be considered when planning and decorating a room. Most people have a difficult time actually visualizing how a new rug (or even an inherited rug) will physically fit into the space. The E-Z DESIGN AND DECORATOR™ System by Cheryl Howard is a professional kit that makes it less intimidating to the average person before he, or she, must make a large financial commitment. What is the room going to look like when the project is finished? This kit enables someone to have fun and play, before they actually make a commitment to a project. ❁